

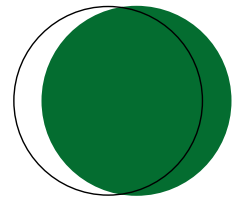


*Tree
Plenish*

Tree-Plenish

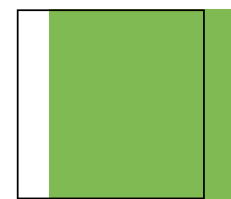
Empowering students to create a more sustainable and equitable future through community tree-planting.

Our Mission



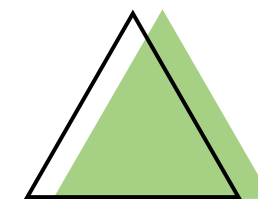
SUSTAINABLE FUTURES

We believe in building a sustainable future by giving back what we take.



POWER OF YOUTH

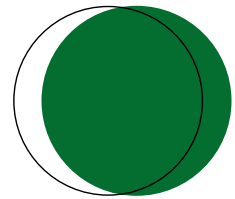
We are committed to channeling the power of youth to create meaningful change.



COMMUNITY STRENGTH

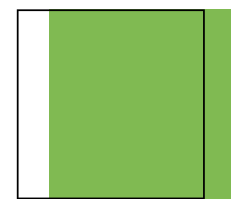
We value the strength of a local community coming together to take action.

Our Mission In Action: Tree-Plenish Events



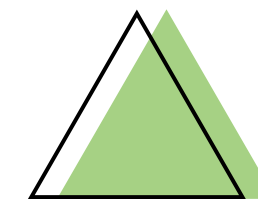
SUSTAINABLE FUTURES

Tree-planting events based on the amount of carbon your school emits in an academic year



POWER OF YOUTH

Tree-Plenish is run by college students and events are hosted by students



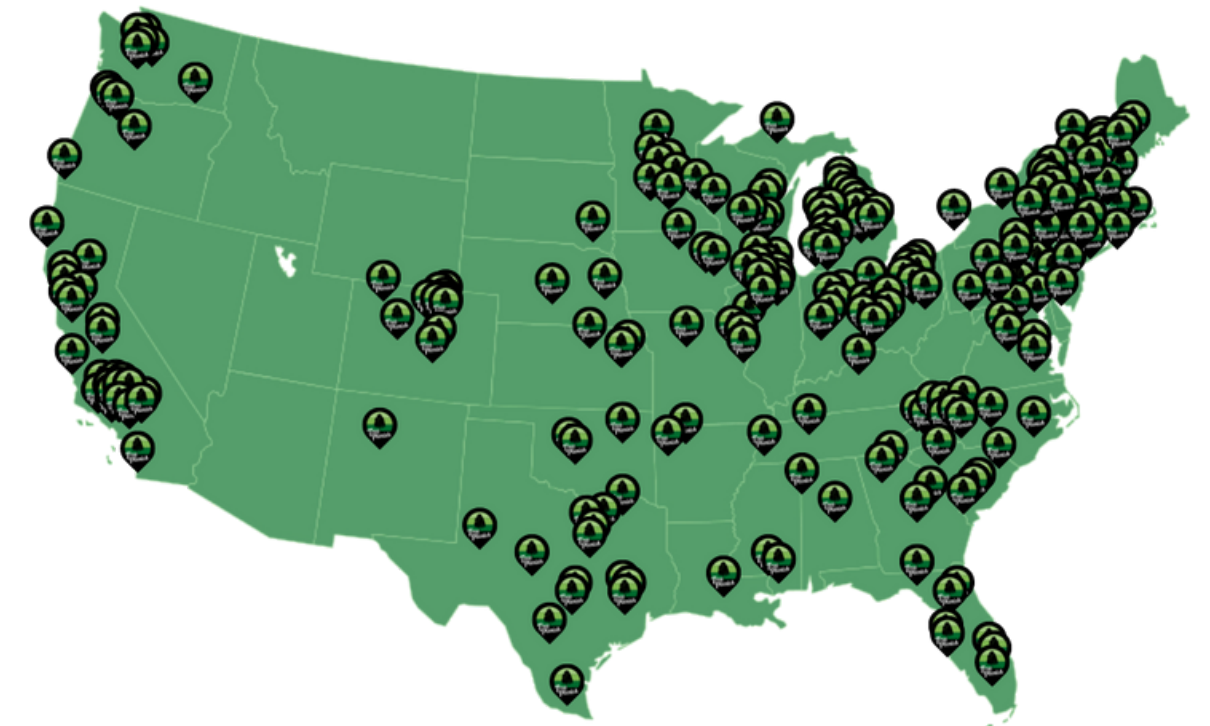
COMMUNITY STRENGTH

Your community is at the center of the event. The saplings are planted in your community by community members



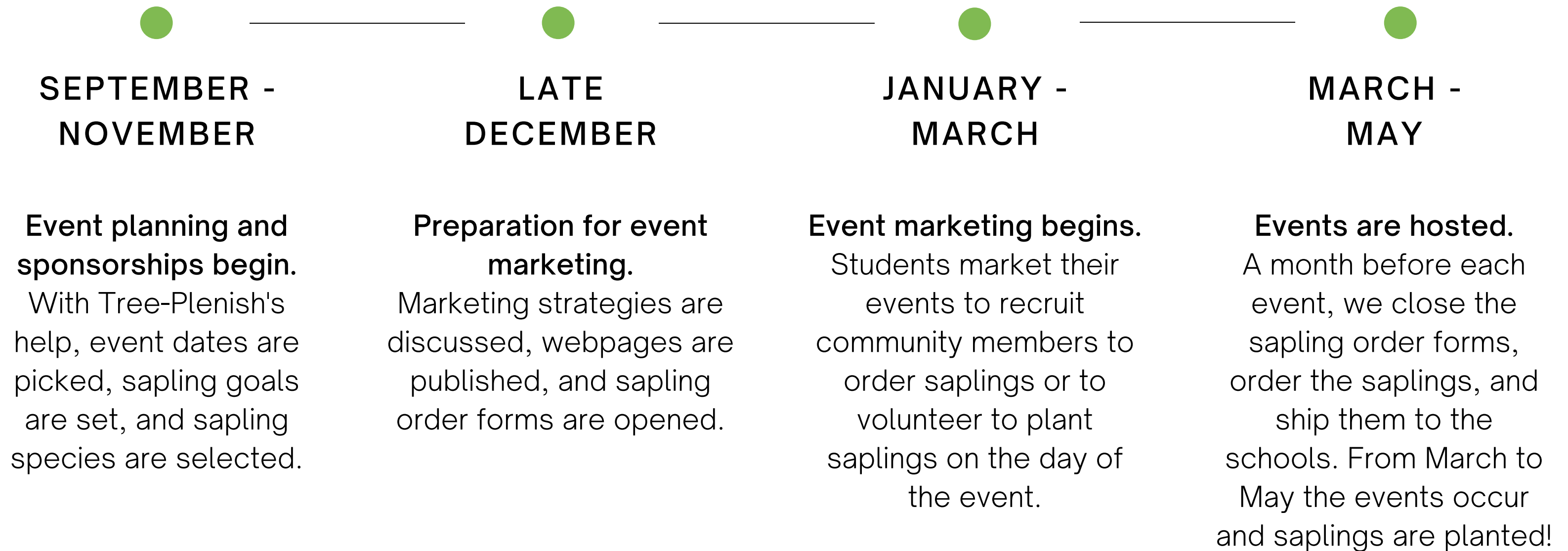
Our Impact

Our **3,000+** volunteers from **300** high schools planted **49,405** saplings across **40** states



Hosting an Event Timeline

The 4 Phases





How we will help you

It's like a project in a box!



We provide the
saplings



We handle the
finances



24/7 access to
mentors



Step by Step
video modules



We handle the
technology



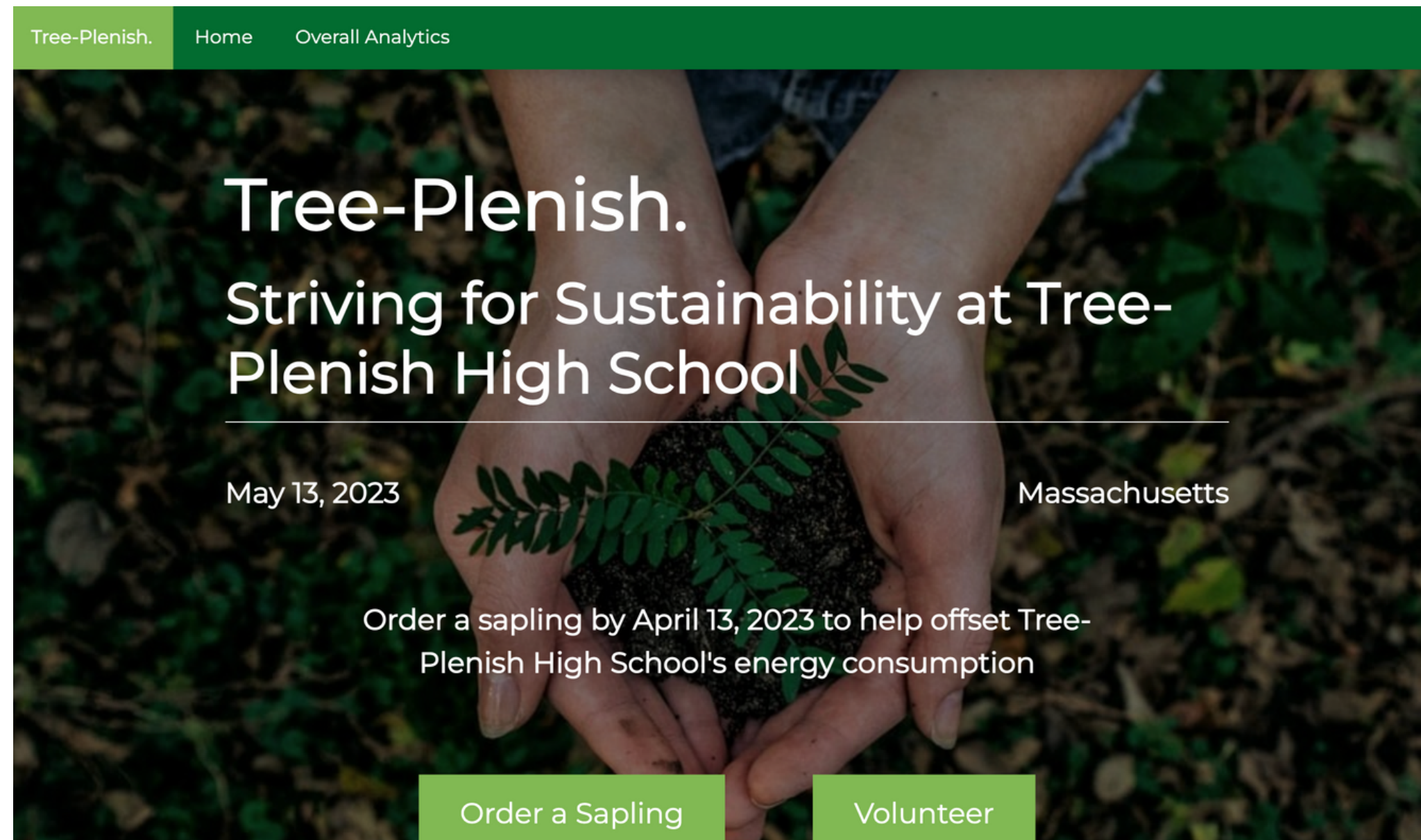
Resources,
graphics, and more

What is **YOUR** role?



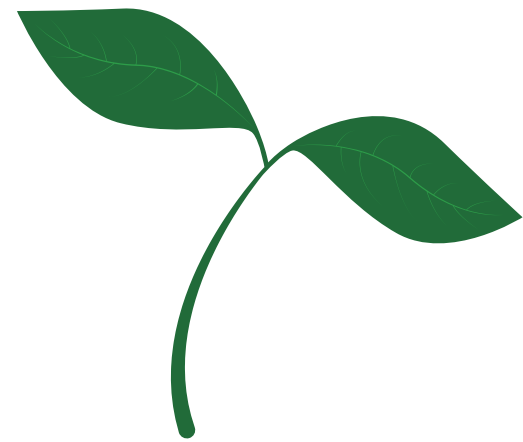
- 1 Pick an event date, set a sapling goal, and select sapling species
- 2 Fundraise to provide free saplings
- 3 Get residents to order saplings and recruit volunteers for the event
- 4 Prepare for and host your event!

Sample Webpage



<http://tpevents.org/school/3000>

What is different this year?



Sapling Goal

Instead of paper usage, sapling goals will be calculated based on your school's energy consumption

Sponsorships

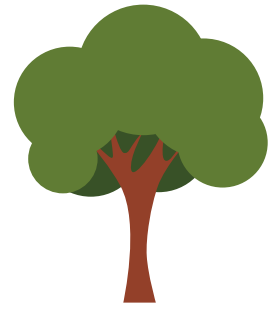
You will be able to solicit sponsorships throughout the planning process. However, it is best to get them before your event marketing begins



Event Webpages

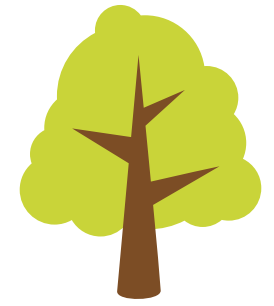
When you fill out the Event Webpage Information form, you will be able to preview your webpage. Once you submit the information, you will have the link to your webpage within 24 hours.

Your Next Steps



Fill out the commitment form

one submission per school



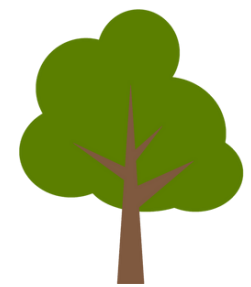
Log in to Thinkific & get started!

one account per school



Reach out with any questions

email: team@tree-plenish.org



Follow us on social media

[@treeplenish](#)

